



ENGEL JACOBS  
LONDON+HERTS



- Ground Floor Flat
- Large Reception
- Private Rear Garden
- One Double Bedroom
- Fitted Kitchen
- Within Easy Reach Of The Town Centre And Elstree & Borehamwood Station



**Stapleton Road**  
Borehamwood

**Monthly Rental Of**  
**£950.00**



**Entrance Hall**

Laminate floor throughout, entryphone, storage cupboard, radiator.

**Bedroom** 13' 1" x 9' 2" (3.98m x 2.79m)

Laminate floor throughout, double glazed windows to front aspect, radiator.

**Reception** 16' 4" x 11' 3" (4.97m x 3.43m)

Laminate floor throughout, double glazed windows to front aspect, radiator, storage cupboard.

**Kitchen** 8' 5" x 6' 9" (2.56m x 2.06m)

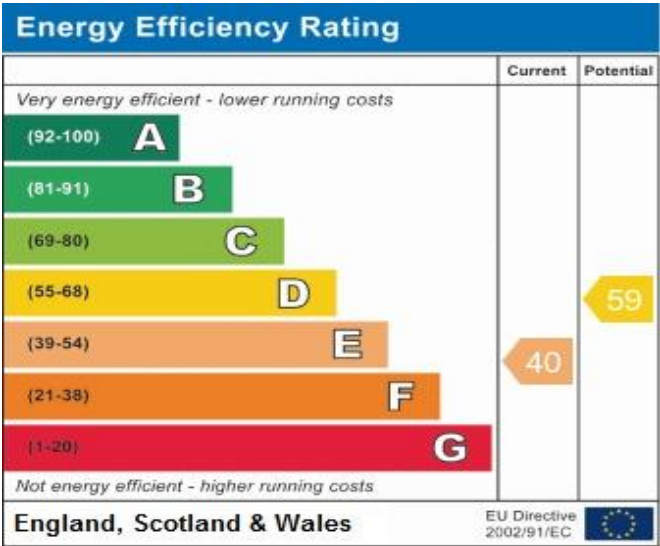
Tiled floor throughout, partly tiled walls, fully fitted units both wall mounted and base, Igenix fridge/freezer, Beko oven and electric hob, space for washing machine, double glazed windows and door to rear garden.

**Bathroom** 5' 7" x 7' 0" (1.70m x 2.13m)

Tiled floor, partly tiled walls, low level WC, pedestal wash basin with mixer tap, bath with overhead shower, obscured double glazed window to rear aspect.

**Rear Garden**

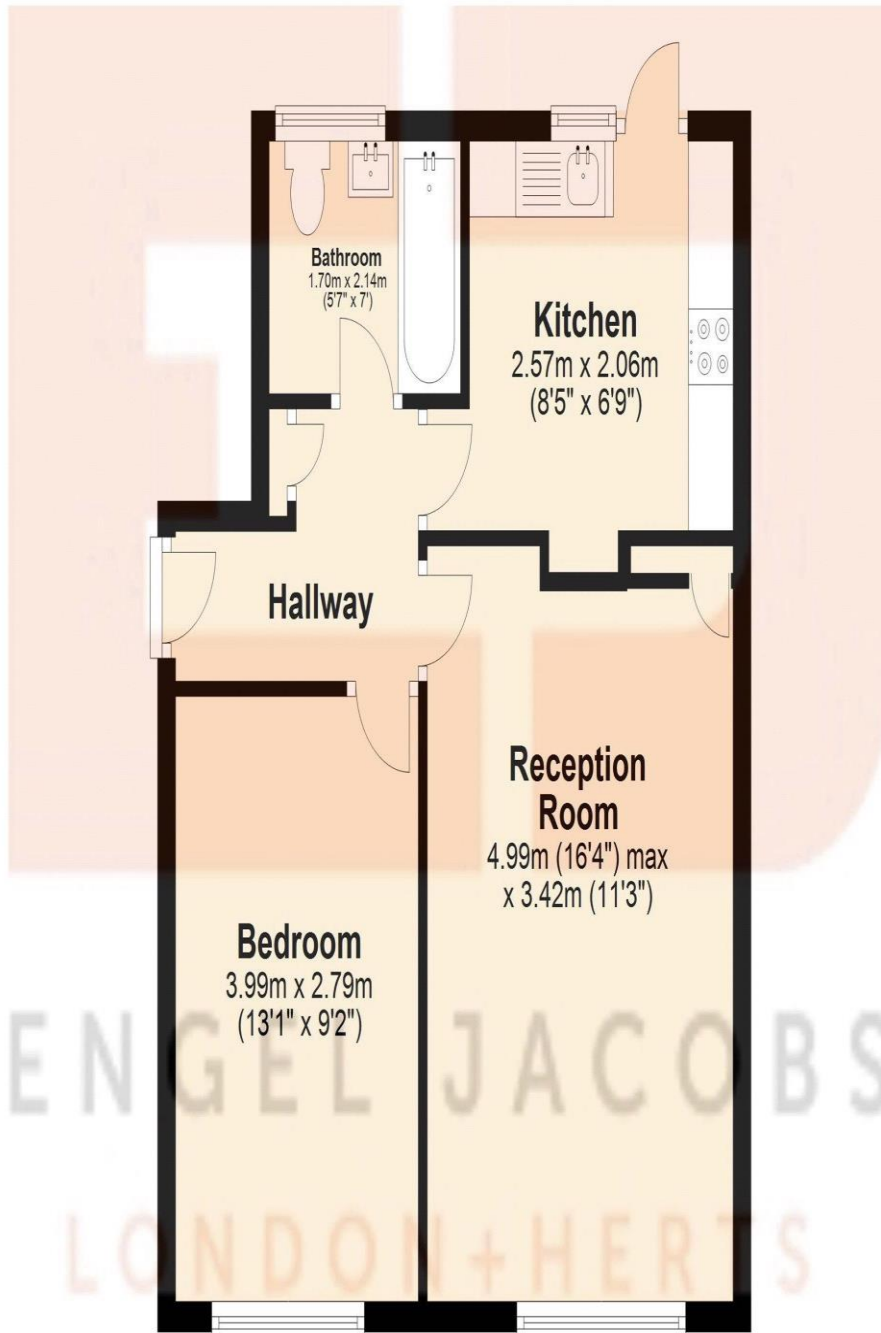
Large decked area, laid to lawn.



Address:  
Stapleton Road, Borehamwood

## Ground Floor

Approx. 45.4 sq. metres (488.8 sq. feet)



Total area: approx. 45.4 sq. metres (488.8 sq. feet)